

00-27738



Fitting instructions for 34-27732 Fuel pump kit

Once shield is removed check position of filter and pump (see diagram 1). If not in this position then remove defective pump, (do not discard) remove filter and re-fit into old pump position using dowty washer's from kit.

Remove double ended union from nose of old pump, remove union from nose of new unit and fit double ended union to nose of new unit. Screw new pump into fuel block until tight.

Push fit elbow hose to back of pump, push banjo elbow into hose and offer up to fitting on Tank (see diagram 2). The elbow hose may have to be trimmed down to align the banjo with the tank. (Do not secure hose at this stage).

Using new dowty washers secure banjo end of elbow into tank (see diagram 3), again check and adjust hose length if required and secure with 'O' clips (see diagram 4).

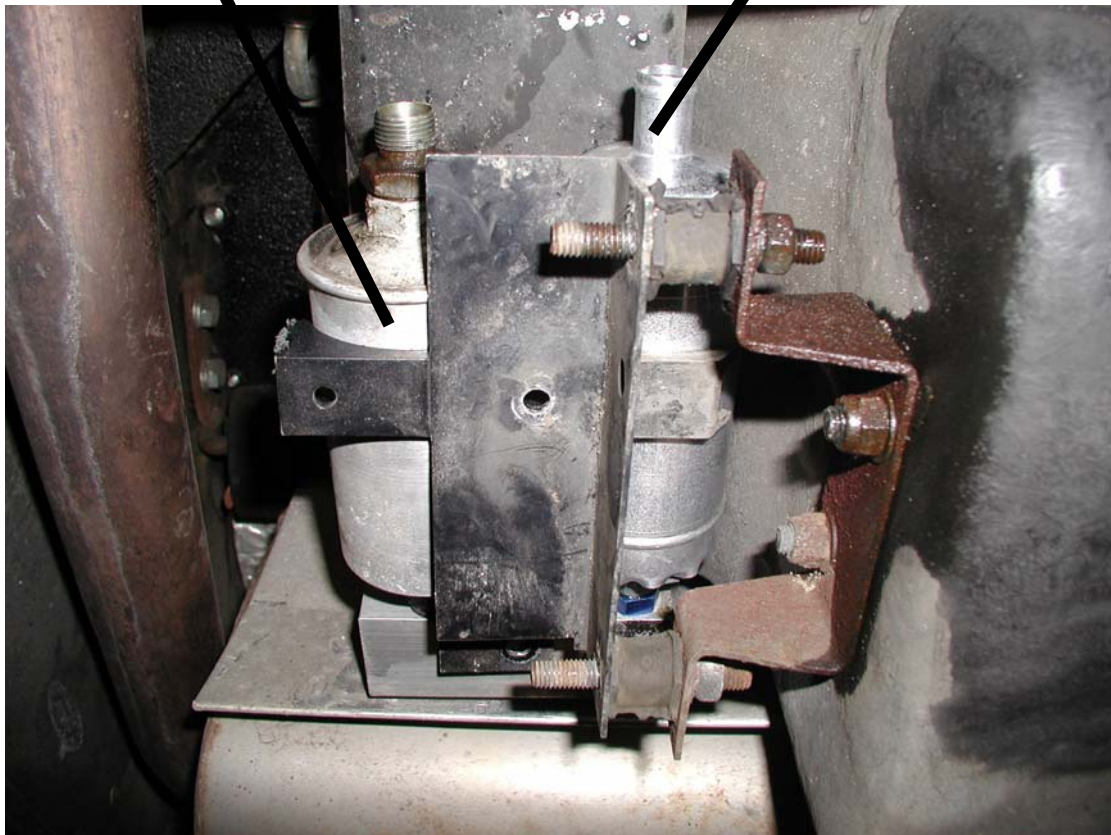
Reconnect electrical terminals, switch on ignition and check for leaks before starting car.

Replace shield and trim to clear hose if required.

34-27732 Diagram 1

Fuel Filter

New Fuel Pump



34-27732 Diagram 2

Fuel filter

New Elbow Banjo Union



New Pump

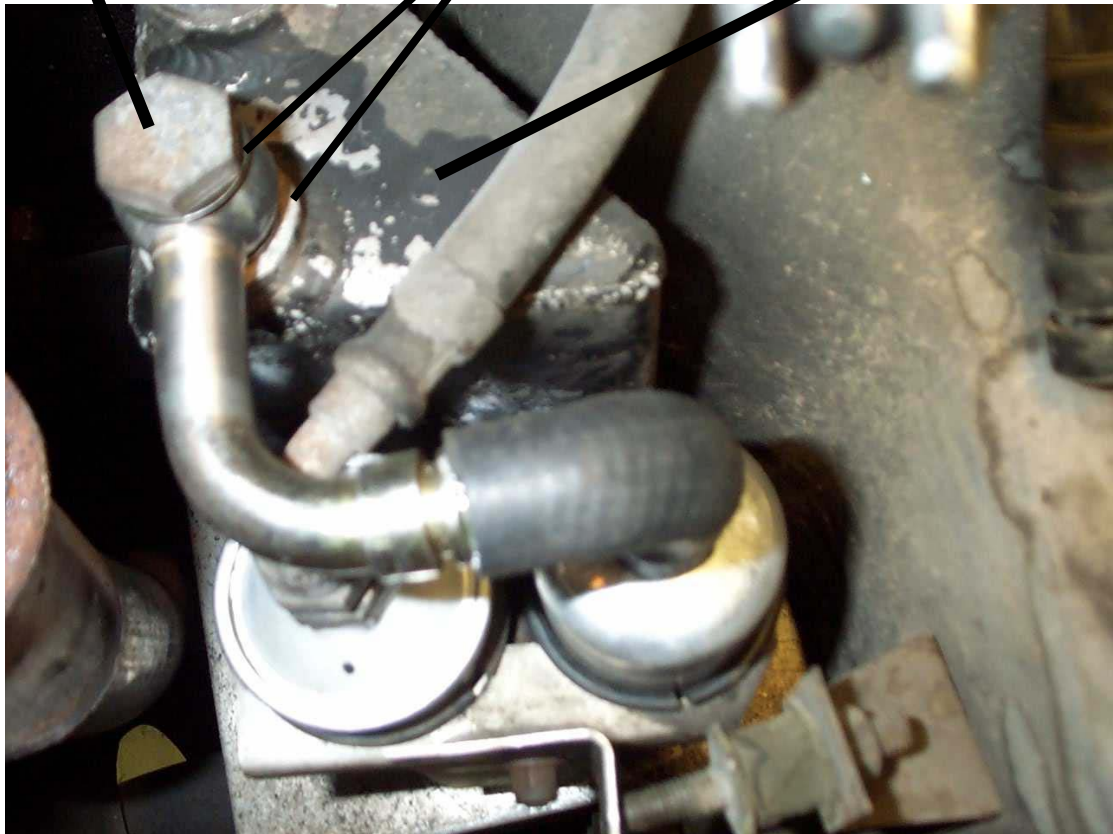
New Elbow Hose

34-27732 Diagram 3

Existing Banjo

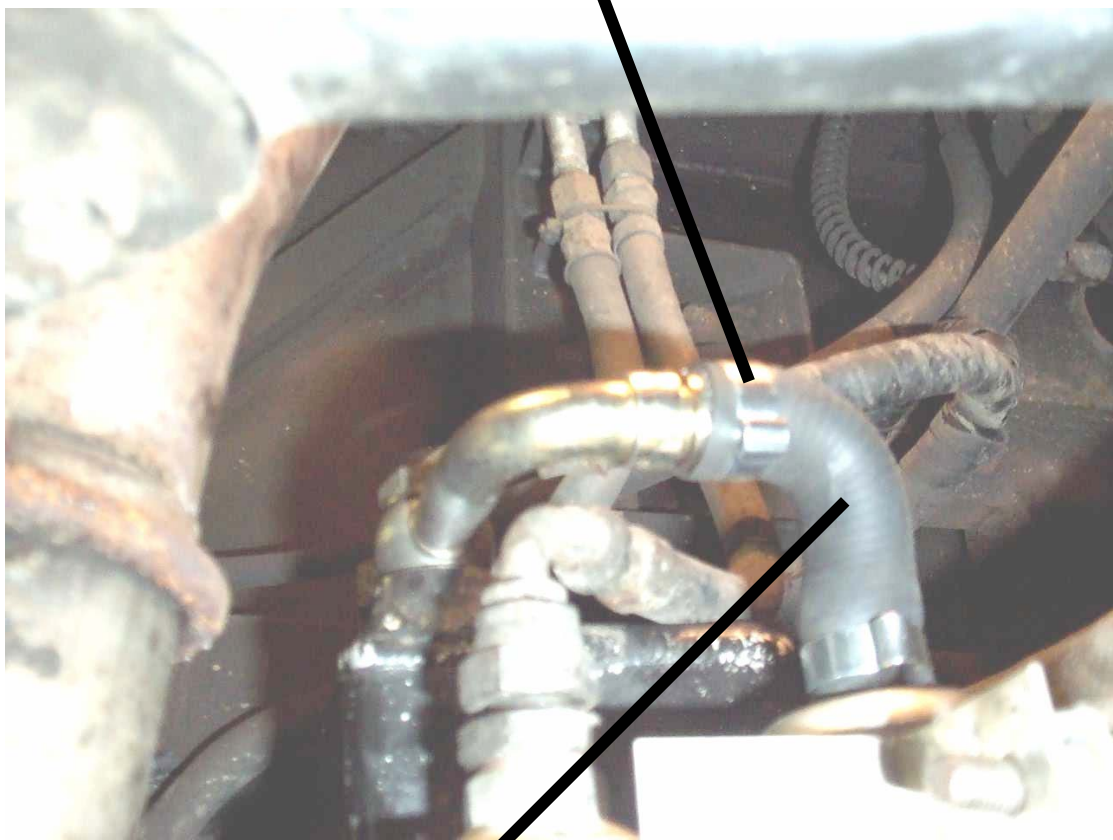
Dowty washers

Surge Tank 'if fitted'



34-27732 Diagram 4

Secure with 'O' Clips



**Hose may have to
be cut down to suit**