

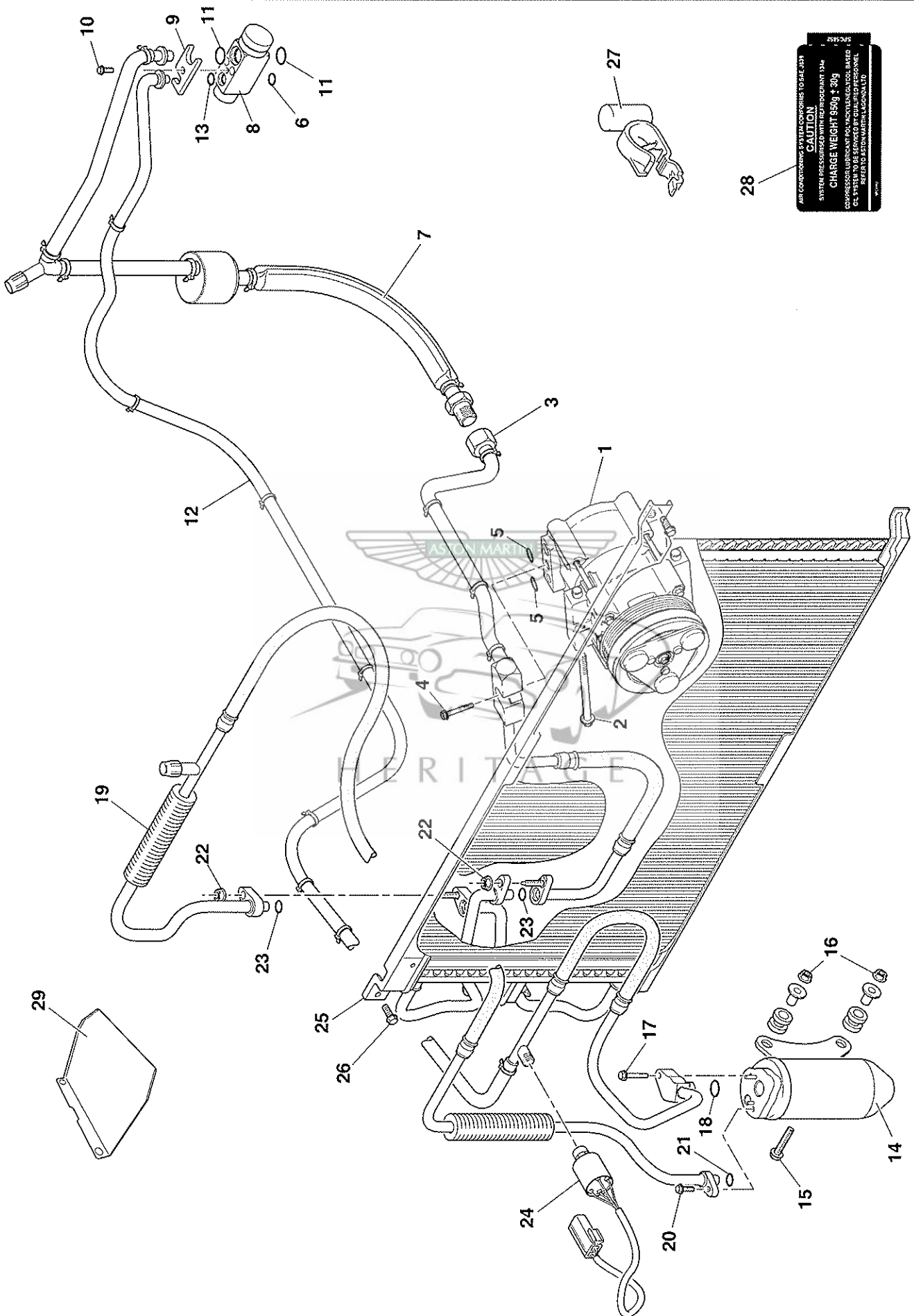
Section 8 - Air Conditioning

- 8.1 Engine Compartment Installation
- 8.2 Interior Installation
- 8.3 Vacuum system



8.1 Air Conditioning Engine Compartment Installation

DB7 VANTAGE



| Item | Pt Number | Description | Qty | Remarks | |
|------|-----------------------|--|----------|--------------|-------------------------|
| 1 | 89-85339 | Compressor and clutch assy - air conditioning | 1 | Zagato/DBAR1 | |
| - | 3R12-19D629-AA | Compressor and clutch assy - air conditioning | 1 | | |
| 2 | 697800 | Bolt, M8 x 113.5 | 3 | | |
| 3 | 89-120069-AB | Pipe and hose assy | 1 | | Pipe assy to condenser |
| 4 | NPN | Screw | 1 | | Pipe assy to compressor |
| 5 | 700554 | "O" ring | 2 | | |
| 6 | 700334 | "O" ring | 1 | | |
| 7 | 89-120068-AC | Pipe, evaporator to condenser | 1 | | |
| 8 | 89-82079 | Expansion valve | 1 | | |
| 9 | 89-82080 | Clamp plate | 1 | | |
| 10 | 697181 | Screw | 1 | | |
| 11 | 700263 | "O" ring | 2 | | |
| 12 | 89-120465-AC | Pipe and hose assy, receiver drier to evaporator | 1 | | |
| 13 | 700555 | "O" ring | 1 | | |
| 14 | 89-85238 | Receiver drier | 1 | | |
| 15 | 699125 | Screw, flg, M6 x 30 | 2 | | |
| 16 | 697122 | Nut nyloc, M6 | 2 | | |
| 17 | 699083 | Screw, flg, M6 x 30 | 1 | | |
| 18 | 699833 | "O" ring | 1 | | |
| 19 | 89-120464-AB | Pipe and hose assy, condenser to receiver drier | 1 | | |
| 20 | 699084 | Screw, flg, M6 x 18 | 1 | | |
| 21 | 699834 | "O" ring | 1 | | |
| 22 | 695526 | Nut, flg, M6 | 2 | | |
| 23 | 699830 | "O" ring | 2 | | |
| 24 | 89-85240 | Pressure switch, A/C | 1 | | |
| - | 37-90075 | Tie strap | 2 | | |
| 25 | 89-85239 | Condenser | 1 | | |
| 26 | 697119 | Screw, flg, M6 x 12 | 2 | | |
| 27 | 37-81862 | Harness clip, stud mounting | 2 | | |
| 28 | 97-123155-AA | Label, air conditioning information | 1 | | |
| 29 | 89-82083 | Deflector shield | 1 | | |
| - | 89-111601-AB | Pag oil dye | 1 | | |
| - | 699906 | Clip, double C | 1 | | |

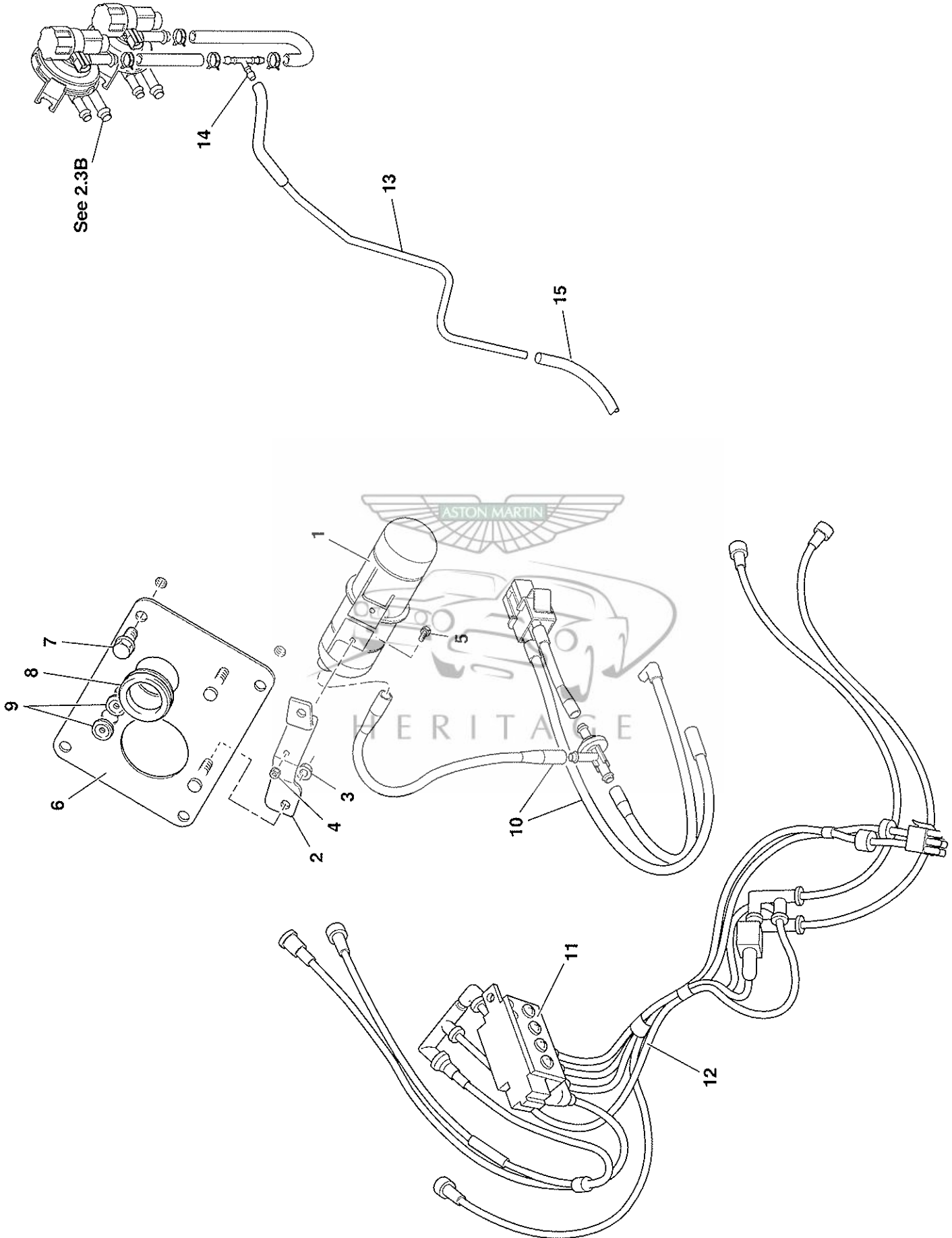
| Item | Pt Number | Description | Qty | Remarks |
|------|---------------------|---|----------|-----------------------|
| 1 | 89-123468-AB | Air conditioning unit assembly - complete | 1 | |
| - | 89-82092 | Switch, water temperature | 1 | |
| 2 | 08-123756-AA | Strut assy, RH | 1 | |
| 3 | 08-123757-AA | Strut assy, LH | 1 | |
| 4 | 89-82097 | Washer, male, spherical seating | 2 | |
| 5 | 89-82098 | Washer, female, spherical seating | 2 | |
| 6 | 697119 | Screw, flg, M6 x 12 | 2 | |
| 7 | 697106 | Screw, flg, M8 x 20 | 2 | |
| 8 | 89-90042 | Seal - air con to body | 1 | |
| 9 | 89-83049 | Seal, top duct | 1 | |
| - | 697411 | Adhesive tape | 1 | |
| 10 | 89-82101 | Duct, air blower to aircon - RH | 1 | |
| 11 | 89-82102 | Duct, air blower to aircon - LH | 1 | |
| 12 | 89-121414-AA | Duct, centre vent | 1 | |
| 13 | 89-84286 | Duct, facia | 2 | |
| 14 | 89-82105 | Duct, demist | 1 | |
| - | 89-82125 | Sealing strip | 1 | |
| 15 | 89-84279 | Duct, foot outlet RH | 1 | |
| - | 89-84280 | Duct, foot outlet LH | 1 | |
| 16 | 89-84283 | Duct, passenger footwell | 1 | USA/CDN only |
| - | 697498 | Screw, flg, No 6 x 13 | 2 | |
| 17 | 89-84288 | Duct, diffuser RH | 1 | Not USA/CDN |
| - | 89-84289 | Duct, diffuser LH | 1 | " " " |
| 18 | 697802 | Screw, self tap | 4 | " " " |
| 19 | 89-84138 | Duct assy, distribution | 1 | |
| - | 89-82112 | Vacuum motor | 2 | Front flap & top flap |
| - | 89-124946-AA | Polyethylene foam CFPE20 | 1 | |
| 20 | 37-122894-AA | Blower motor assy - RH | 1 | |
| 21 | 37-122893-AA | Blower motor assy - LH | 1 | |
| 22 | 89-82131 | Stay assy, volute to body, inner | 2 | |
| 23 | 89-83051 | Stay assy, volute to body, outer | 2 | |
| 24 | 89-82132 | Seal assy, blowers | 2 | |
| 25 | 89-85245 | Grommet | 2 | |
| 26 | 89-123285-AA | Tube, condensate drain | 2 | |
| 27 | 89-82135 | Connector, condensate drain | 2 | |
| 28 | 89-82136 | Clip | 2 | |
| 29 | 697299 | Washer, sprf int, 1/4" | 4 | |
| 30 | 697414 | Screw, 1/4" UNF x 3/4" | 4 | |
| 31 | 697157 | Nut, nyloc, 1/4" UNF | 4 | |
| 32 | 89-83052 | Vent, facia | 2 | |
| - | 89-83631 | Knob, facia vent slide | 2 | |
| - | 89-82137 | Sensor assy, self aspirator | 1 | |
| - | 89-82138 | Sensor assy, ambient | 1 | |
| - | 697612 | Cable tie strap | 10 | |
| 33 | 89-83651 | Motor, servo vacuum | 2 | |
| - | 89-85242 | Foot duct, RH | 1 | |
| - | 89-85243 | Foot duct, LH | 1 | |
| 34 | 89-83652 | Sensor, evaporator | 1 | |

| Item | Pt Number | Description | Qty | Remarks |
|------|---------------------|--|-----|---------|
| 35 | 89-82094 | Module, A/C control | 1 | |
| 36 | 89-82087 | Potentiometer and mounting plate assy, upper | 1 | |
| 37 | 89-82088 | Potentiometer and mounting plate assy, lower | 1 | |
| - | 89-122289-AA | Blanking plug | 2 | |
| 38 | 89-85130 | Evaporator assy | 1 | |
| 39 | 89-83656 | Heater matrix and seals | 1 | |
| 40 | 89-83657 | 'O' ring, matrix to pipes | 2 | |
| 41 | 67-84524 | Trunk assy, air extraction | 4 | Coupe |
| - | 67-85244 | Gasket, air extraction trunk | 4 | " " |
| - | 34-81380 | Strip, edge protection (35mm) | 2 | " " |
| 42 | 697803 | Washer rivet, 0.250" - 0.312" | 16 | " " |
| - | 67-84524 | Trunk assy, air extraction | 2 | Volante |
| - | 67-85244 | Gasket, air extraction trunk | 2 | " " |
| - | 67-83776 | Trunk assy, air extraction | 2 | " " |
| - | 67-84862 | Shroud, air extraction trunk | 2 | " " |
| - | 697803 | Washer rivet, 0.250" - 0.312" | 20 | " " |
| 43 | 697449 | Screw, flg, No8 x 13 | 6 | |
| - | 89-124873-AA | Tube, centre console | 2 | |



8.3 Air Conditioning Vacuum System

DB7 VANTAGE



| Item | Pt Number | Description | Qty | Remarks |
|------|---------------------|---------------------------------------|-----|-----------------|
| 1 | 89-84150 | Vacuum tank | 1 | |
| 2 | 89-122336-AA | Bracket, vacuum tank | 1 | RHD |
| - | 89-122337-AA | Bracket, vacuum tank | 1 | LHD |
| 3 | 697251 | Nut, flanged M5 | 2 | |
| - | 697182 | Nut, flanged M8 | 2 | |
| 4 | 697251 | Nut, flanged M5 | 2 | |
| 5 | 697320 | Screw, M5 x 20 | 2 | |
| 6 | 20-121495-AC | Mounting plate, vacuum tank | 1 | RHD |
| - | 20-121494-AC | Mounting plate, vacuum tank | 1 | LHD |
| 7 | 697350 | Screw, hex | 2 | |
| 8 | NSS | Grommet | 1 | Part of harness |
| 9 | 697804 | Grommet, 15.7 ID 1.6 p.t | 2 | |
| 10 | 89-122334-AB | Harness assy, vacuum supply | 1 | RHD |
| - | 89-122335-AB | Harness assy, vacuum supply | 1 | LHD |
| 11 | 89-82093 | Solenoid bank (4 way) | 1 | |
| 12 | 89-82149 | Vacuum harness assy, air conditioning | 1 | |
| - | 89-82150 | Vacuum restrictor - brown | 1 | Part of item 12 |
| - | 89-82151 | Vacuum restrictor - blue | 1 | " " " |
| - | 89-82152 | Vacuum restrictor | 1 | " " " |
| 13 | 34-120919-AA | Pipe, underfloor vacuum signal | 1 | |
| 14 | 13-83836 | T piece, equal, 6mm | 1 | |
| 15 | 34-124965-AA | Hose, vacuum | 1 | |

